



August Newsletter

Preserving Our Past by Protecting Our Future

Let's Shave the Peak!



We have been hearing a lot about energy supply and demand. In February, we saw Texas residents lose electricity as a result of the state's massive power failure. It turned out that Texas' unregulated energy sector and electric grid were not prepared to meet the demands that days of freezing temperatures created, despite a similar crisis in 2011. Texas had not required power plants, oil field pumps and wind turbines to be winterized, and there was no back-up capacity to generate the electricity needed to cope with this excess demand.

Closer to home, the Marblehead Municipal Light Department (MMLD) has chosen to invest in a new fossil fuel plant in Peabody (dubbed Project 2015A in DPU filings) to provide additional back-up capacity during peak demand periods here in Massachusetts. While this proposed oil and gas fueled plant is intended to meet increased electricity demand during periods of extreme temperatures associated with climate change, the fact that it relies on the burning of more fossil fuels will unfortunately only worsen the climate crisis.

So, what can we do to make sure that we have the electricity we need during extreme heat and cold while also addressing the climate crisis? One answer is for Marblehead residents to work together to “shave the peak” by reducing our consumption of electricity during peak demand periods, which usually occur between 4 and 8 pm on extremely hot and cold days. Even small changes, like waiting to charge your car, run your dishwasher or washer and dryer or adjusting your thermostat by only a few degrees, can make a big difference.

By signing up for Marblehead’s Code Red alert system on the town’s [website](#), you will be notified by MMLD when we are approaching a peak demand period, and you can choose to reduce your use of appliances and moderate your home’s temperature during that time. By doing so, you will help reduce carbon emissions and reduce your electric bill since peak demand periods require the town to purchase power from back-up sources which are typically dirtier and more expensive, costs which are then passed on to ratepayers. In fact, the 10% of power purchased during peak demand times represents 40% of our town’s total power costs!

There are many ways to conserve electricity, and we recommend visiting MMLD’s [website](#) for additional suggestions.

Louise Yarmoff Chosen as Our New Executive Director



We are pleased to announce that Louise Bullis Yarmoff will become our next Executive Director beginning on August 15. Louise replaces Lynn Bryant, who has held the position since May of 2019. An educator and communicator, Louise has been active in Sustainable Marblehead for several years serving on the Clean Energy and Public Policy and Town Trees Working Groups. She was also instrumental in the redesign of our website.

Most recently an English as a Second Language teacher in Lynn, Louise has also served as project manager for an educational exchange program for French young professionals and worked as an editor in the financial services industry. Having grown up in Marblehead, Louise returned in 2015 after living in Japan and France. She and her husband, Jean-Jacques, are working to improve the energy efficiency of their historic home and enjoy sailing their sloop, Daphne.

Please join us in thanking Lynn for her leadership and welcoming Louise to her new role!



Tree Plantings on Atlantic Avenue

Everyone who attended Town Meeting in May 2019 no doubt remembers the spirited and entertaining presentation of Article 9 by David Hooks, when the Town voted to appropriate \$50,000 for the planting of new town trees. After considerable collaboration among various town departments, the new trees are currently being planted along Atlantic Avenue.



Abbot Hall Tree Walk

Our new walking guide to the trees surrounding Abbot Hall is now available at Abbot Hall and the Chamber of Commerce's Information Booth. For a preview before you pick up your guide, click [here](#).



Meet our Outdoor Challenge Winner!

Congratulations to Maris McCreedy! Maris, who will be entering 2nd grade in the fall, spent 60 hours a month outdoors in March, April and May to



Enjoy a Private Walking Tour of Marblehead's Little Harbor

Join local resident and social and cultural historian Judy Anderson for a private guided walk, during which you will enjoy stunning views while learning about Little Harbor's history and current conservation issues. Donations

win our Outdoor Challenge. Thank you, Maris, for your commitment. You are an inspiration!

will support Sustainable Marblehead!
[Learn more.](#)



Seaglass Village – Neighbors Helping Neighbors

The Seaglass Village is a new community of neighbors in the greater Marblehead, Swampscott and Nahant area helping each other maintain their dignity, independence, freedom and safety as they age in their homes. Seaglass Village provides a coordinated network of volunteers and vetted paid services as well as friends who enjoy recreational, social, cultural and educational events.

They have two planned August events which are open to everyone:

August 6 - Lunch Out With Friends

August 19 - Zoom Introduction to Seaglass Village (approx. 30 minutes)

For more information and to register for these events, please visit their website: www.Seaglassvillage.org

Upcoming Event



Save the Date!

September 11, 2021

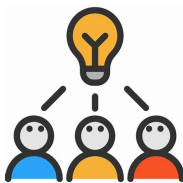
9:30-10:30 a.m.

Sustainable Marblehead and SPUR look forward to hosting our third annual **Land and Sea Cleanup!** Details on how you can get involved will be available soon..



Did You Know?

One pint of oil released into the water when fueling a boat can spread into a one-acre oil slick; larger than a U.S. football field.



What Can You Do?

When fueling your boat, be prepared with absorbent pads, or consider a fuel collar for spill prevention. The U.S. Coast Guard recommends filling inboard tanks to 90% to avoid overflow.

Support

Sustainable Marblehead is a community organization working to reduce waste and achieve net-zero carbon emissions by 2040. Our work is important, and we can't do it alone. Please join us by donating today.

[Donate Today](#)



Copyright © 2021 Sustainable Marblehead. All rights reserved.

